

# TIPS FOR PLACEMENT OF HURRICANE DEBRIS & BULK YARD WASTE ON SWALE

Please separate your debris to the following piles:

- Construction Debris
- Vegetation Waste
- Furniture/Appliances

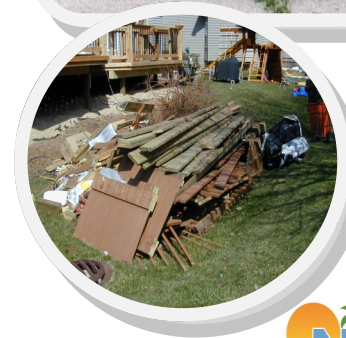
**DO NOT** put your debris on or around your mailbox, fire hydrant, street sign, utility poles/boxes and sidewalks.

The claw truck used to pick up debris will be unable to maneuver around these items.

Recovery of hurricane debris will begin the week of September 18th.

Please be advised of the following:

- Tree & vegetation waste will be picked up on the first go around by the City hired contractor for debris recovery.
- Hurricane related construction debris will be picked up on the second go around by the City hired contractor.
- Furniture/Appliance & regular bulk waste will be picked up by after hurricane debris has been removed.
- Your regular trash & recycling service schedules are active and remains the same. Please do not mix your recycling with regular trash.
- Hazardous waste will **NOT** be collected.



FOR MORE INFO & TO BE ADDED TO THE CITY'S ROBO-CALL SYSTEM FOR CITY NEWS & UPDATES PLEASE CONTACT THE PUBLIC WORKS & UTILITIES DEPARTMENT (954) 724-7070 OR EMAIL [PW@NLAUDERDALE.ORG](mailto:PW@NLAUDERDALE.ORG)