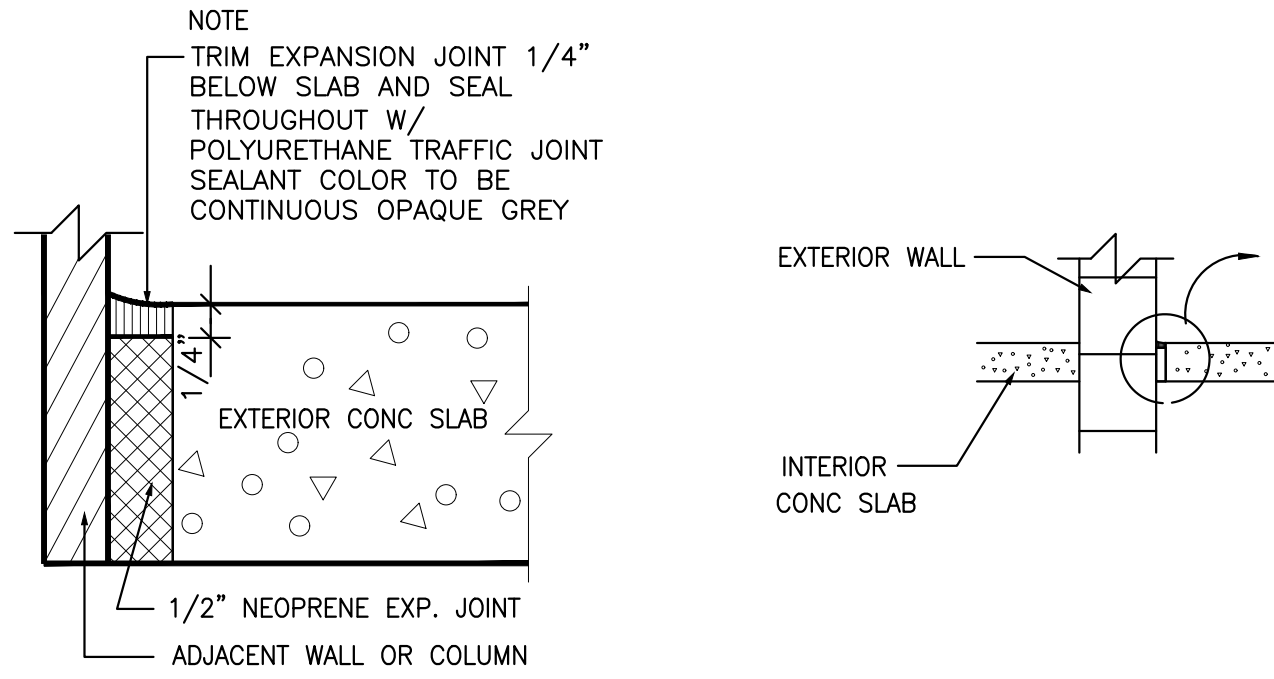


### 1 CONCRETE BOLLARD DETAIL

SCALE: 1/2" = 1'-0"



### 2 EXPANSION JOINT DETAIL

SCALE: NTS



### FLOOR PLAN

SCALE: 1/8" = 1'-0"

#### LEGEND

- EXISTING 8" CMU WALL TO REMAIN
- EXISTING INTERIOR PARTITION WALL TO REMAIN
- NEW 6" DIAMETER CONCRETE FILLED STEEL BOLLARD (TYPICAL OF 4). SEE DETAIL 1/A20.01
- NEW IMPACT RESISTANT FOUR-FOLD APPARATUS BAY DOOR. SEE DOOR SCHEDULE
- NEW IMPACT RESISTANT APPARATUS BAY OVERHEAD DOOR. SEE DOOR SCHEDULE
- DOOR TAG. REMOVE EXISTING OVERHEAD DOOR AND PROVIDE NEW DOOR AS PER DOOR SCHEDULE THIS SHEET

#### KEYNOTES

- 01 CONTRACTOR SHALL PROVIDE NEW FOUR FOLD DOORS AT THIS LOCATION. SEE DOOR SCHEDULE THIS SHEET
- 02 CONTRACTOR SHALL PROVIDE NEW OVERHEAD DOORS AT THIS LOCATION. SEE DOOR SCHEDULE THIS SHEET
- 03 REMOVE EXISTING BOLLARDS AND PROVIDE NEW 6" STEEL BOLLARDS AT THIS LOCATION ON FRONT ELEVATION. TYPICAL OF (4)
- 04 EXISTING STEEL BOLLARDS AT REAR ELEVATION TO REMAIN. TYPICAL OF (4)
- 05 PROVIDE REMOTE CONTROL ACCESS TO BOTH FOUR-FOLD DOORS AT THIS LOCATION. LOW VOLTAGE POWER. FIELD VERIFY AND COORDINATE FINAL LOCATION WITH OWNER
- 06 CONTROL BOX FOR DOOR 1. FIELD VERIFY AND COORDINATE FINAL LOCATION WITH OWNER
- 07 CONTROL BOX FOR DOOR 2. FIELD VERIFY AND COORDINATE FINAL LOCATION WITH OWNER
- 08 REMOVE EXISTING OVERHEAD DOORS, FRAMES, HOUSING, MOTORS, ETC
- 09 LOCATE EXISTING CIRCUITS AND DISCONNECT POWER TO ALL EXISTING APPARATUS BAY OVERHEAD DOOR MOTORS. TYPICAL AT ALL APPARATUS BAY DOORS. FIELD VERIFY LOCATIONS
- 10 CONNECT MOTOR POWER TO EXISTING MOTOR CIRCUIT FOR EACH DOOR
- 11 PROVIDE REMOTE CONTROL ACCESS TO BOTH OVERHEAD DOORS AT THIS LOCATION. LOW VOLTAGE POWER. FIELD VERIFY AND COORDINATE FINAL LOCATION WITH OWNER
- 12 CONTROL BOX FOR DOOR 3. FIELD VERIFY AND COORDINATE FINAL LOCATION WITH OWNER
- 13 CONTROL BOX FOR DOOR 4. FIELD VERIFY AND COORDINATE FINAL LOCATION WITH OWNER
- 14 EXISTING 6" CURB TO REMAIN

DOOR SCHEDULE										HARDWARE		
DOOR No	DOORS				FRAME				REMARKS	DESIGN PRESSURES	LOCK TYPE	
	SIZE	MATL	TYPE SEE ELEV	FINISH	MAT'L	FINISH	FIRE LABEL	THRESH HOLD				
1	14'-0"	14'-0"	-	MTL	AA	G. MTL	-	-	-	FOLDING BAY DOOR*	+50.00 -55.00	
2	14'-0"	14'-0"	-	MTL	AA	G. MTL	-	-	-	FOLDING BAY DOOR*	+50.00 -55.00	
3	14'-0"	14'-0"	-	MTL	BB	G. MTL	-	-	-	OVERHEAD DOOR **	+50.00 -55.00	SLIDE BOLT
4	14'-0"	14'-0"	-	MTL	BB	G. MTL	-	-	-	OVERHEAD DOOR **	+50.00 -55.00	SLIDE BOLT

\* DOORS 01-02: FOUR FOLD APPARATUS BAY METAL DOORS WITH OVERHEAD HIGH SPEED POWER OPERATOR AND HIGH CYCLE DURABILITY. DESIGN FOR 1,000,000 CYCLES MIN. AND A SPEED OF 24" PER SECOND MIN. DOOR FRAME 11 GA. STRUCTURAL STEEL TUBE & 14 GA. SHEET STEEL. FULLY WEATHER STRIPPED W/ TIGHT PERIMETER WEATHER SEAL PACKAGE

\*\* DOORS 03-04: HIGH CYCLE, GALVANIZED METAL ROLLING DOOR BY CORNELL IRON WORKS INC. OR APPROVED EQUAL. POWER OPERATED W/ 5F FLAT SLAT. HOT DIPPED GALVANIZED STEEL BOTTOM BAR, CURTAIN, HOOD, AND COVER. HOT DIPPED GALVANIZED GUIDES AND HEAD PLATES. FULLY WEATHER STRIPPED W/ PERIMETER WEATHER SEAL PACKAGE. PAINTED IN FIELD. BY CORNELL IRON WORKS INC. OR APPROVED EQUAL.

NOTES:  
 1. ALL EXTERIOR BAY DOORS TO HAVE MIAMI-DADE NOA OR FLORIDA PRODUCT APPROVAL. WIND-LOAD DESIGN PRESSURE CALCULATIONS SHALL BE FOR 200 MPH WIND SPEEDS  
 2. LARGE MISSILE TEST SHALL BE LEVEL E, PERFORMED WITH AN IMPACT SPEED OF 80 FEET PER SECOND FOR RISK CATEGORY IV-ESSENTIAL FACILITY BUILDINGS,  
 3. ALL EXTERIOR DOORS SHALL PASS TAS 202-94 TESTING FOR AIR LEAKAGE AND WATER INFILTRATION

ALL HARDWARE TO COMPLY WITH THE FLORIDA BUILDING CODE SIXTH EDITION (2017) ACCESSIBILITY

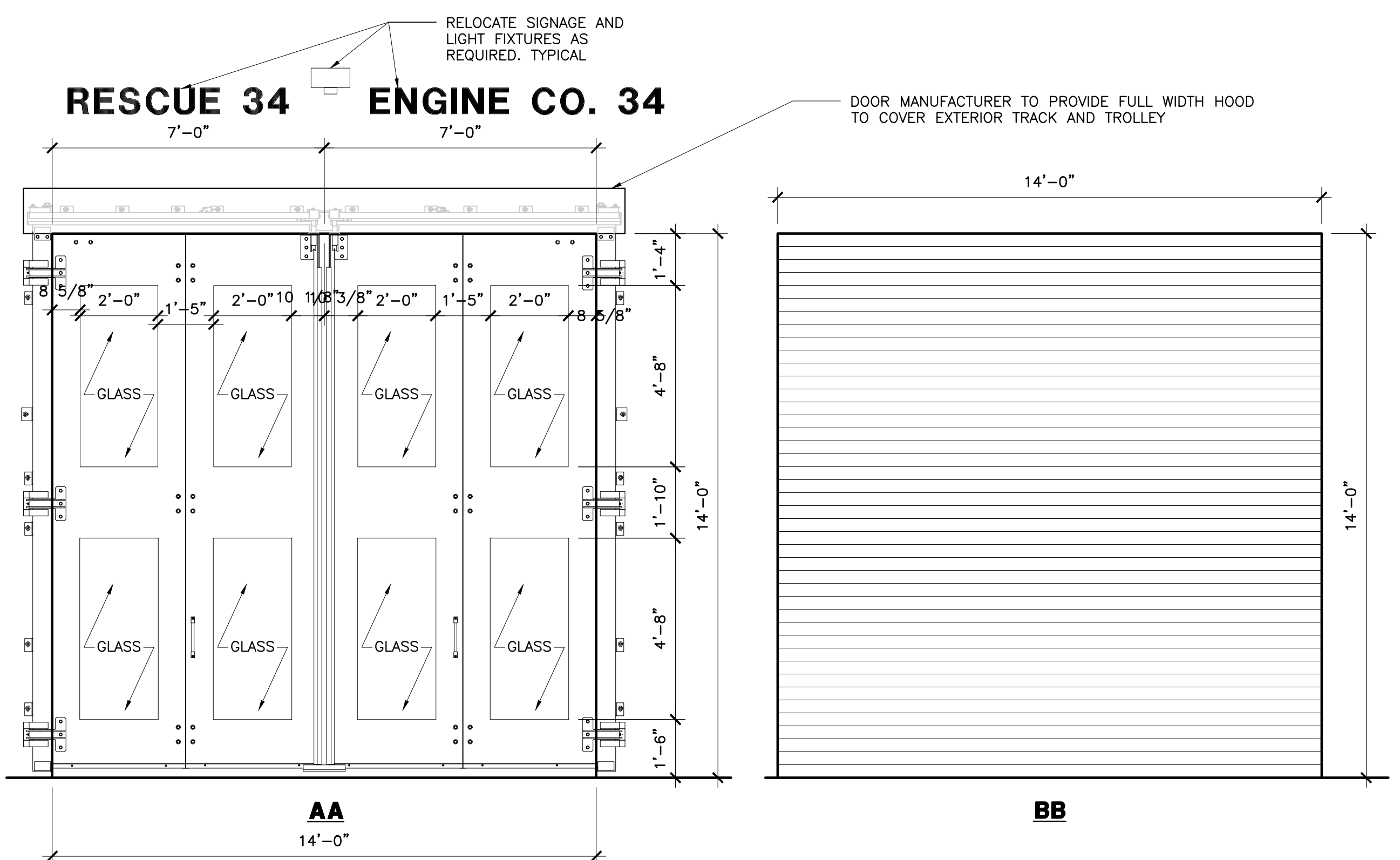
#### LOCKSET TYPE:

1. CLASSROOM LOCKSET F05 (HEAVY DUTY MORTISE), WEATHER STRIP, THRESHOLD, HINGES, DOOR STOP, CLOSER, SILENCERS
2. STOREROOM LOCKSET F07, WEATHER STRIP, THRESHOLD, SILENCERS, HINGES, CLOSER, DOOR STOP

#### HARDWARE

LOCK SPECIFICATION - "BEST" 40H SERIES LOCKS - HEAVY DUTY LEVER - 14K FINISH - 626 MORTISE LOCK

FIELD VERIFY ALL EXISTING DIMENSIONS PRIOR TO BIDDING THE PROJECT AND ORDERING ANY MATERIALS. DIMENSIONS SHOWN HERE ARE APPROXIMATE AND SHOULD BE USED ONLY AS REFERENCE TO AID IN THE BID PROCESS. CONTRACTOR IS RESPONSIBLE FOR FIELD VERIFYING SIZE OF ALL EXISTING OPENINGS AND COORDINATING INSTALLATION BETWEEN MANUFACTURING FACILITIES AND CONSTRUCTION PERSONNEL. TYPICAL



### DOOR SCHEDULE

SCALE: NTS

**WALTERS ZACKRIA ARCHITECTS**  
 5813 N. ANDREWS WAY  
 FORT LAUDERDALE, FL 33309  
 PHONE: (954) 522-4123  
 FAX: (954) 522-4128  
 www.wza-architects.com

Abbas H. Zackria, FL AR 91520  
 Florida Registration: AA2600970  
 CORPORATE NAME: WALTERS ZACKRIA ASSOCIATES, PLLC REGISTERED IN THE STATE OF FLORIDA. WRITTEN DIMENSIONS TAKE PRECEDENCE OVER SCALED DIMENSIONS. THESE DRAWINGS ARE THE PROPERTY OF WALTERS ZACKRIA ASSOCIATES, PLLC, AND SHALL NOT BE REPRODUCED WITHOUT WRITTEN PERMISSION FROM A PRINCIPAL OF THE FIRM OR BE LIABLE FOR THE FULLEST LEGAL RECOURSE. CONTRACTOR SHALL VERIFY ALL EXISTING CONDITIONS AND DIMENSIONS AND NOTIFY THE ARCHITECT OF ANY DISCREPANCIES PRIOR TO EXECUTION OF WORK.

**CITY OF NORTH LAUDERDALE**  
**FIRE STATION 34**  
**WIND MITIGATION PROJECT**  
 6151 BAILEY RD  
 NORTH LAUDERDALE, FL 33068

DRAWN BY: OM/AZ  
 CHECKED BY: AZ  
 DATE: 03/24/20  
 REVISIONS:



1905  
 SHEET  
**A20.01**

FLOOR PLAN